

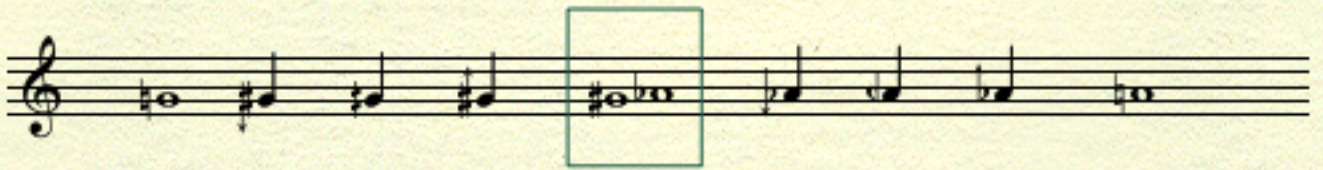
Uwe Lohrmann

Attouchements

für 2 Flöten

Heidelberg 2008

Tabelle der Achteltöne



für Brigitte Sauer

für Barbara Rosnitschek

ATTOUACHEMENTS

für 2 Flöten

Uwe Lohrmann

Viertel etwa 88

etwas zu tief (1/4) intonieren

normal dolce normal

mf *mp* *mf*

7 *f* *mf* *ff* *mf* *f* *ff* (stacc.) quasi pizz. normal

7 *f* *mf* *f* *mf* (stacc.) quasi pizz. normal

12 *f*

12 (stacc.) *mf* *f*

16 *mf* dolce *p* *mp* *pp*

16 *mf* dolce *p* *mp*

21 *p* *p* *p*

26 *mf*

26 *pp* *mf*

30 *p* *mp* *p*³

30 *p* *mp* *mp*

33 *mf* *p* *f* *ff*

33 *p* *tr* (#) *ff*³

35 *f* *mp* *f* *mf* *f* *diminuendo*

35 *f* *mp* *f* *mf* *f* *diminuendo*

39 *mf*

39 *mf*

45 *dolce* *mp*

45 *dolce* *mp*

51 *mp* *mf*

51 *mp* *mf*

55 dolce *p mp p mp mf*

60 Flttz. normal *f p*

62 *f*

63 *f*

66 Flttz. normal *mf*

68 *f mf ff*

70 dolce *mp* *p*

70 dolce *mp* *ff*

73 *mf* *mp* 3

73 *mf* *mp* 3

78 *p* *mf* 5

78 *p* *mf* 6 5

82 3 *f* *mf* *p*

82 *f* *mf*

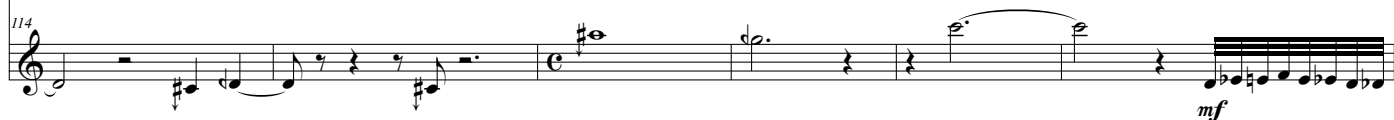
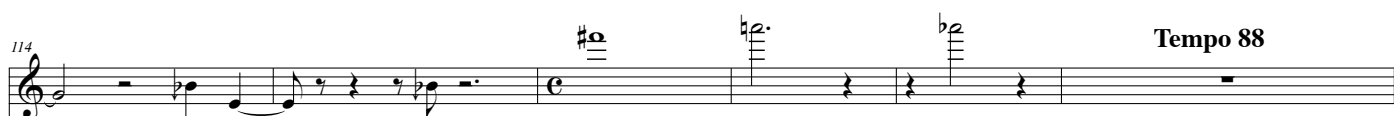
85 molto dolce *sempre p* *mp* 3

85 molto dolce *sempre p* *mp* 3 3

Tempo 75

89 molto dolce *mf* *mp* *p*

89 molto dolce *mf* 3 *mp* *p*



127 *tr (b)* *p* *f*

127 *tr (#)* *p* *f*

132 *mehr piano*

132 *mehr piano*

137 *p e dolce*

137 Flauto alto *p e dolce*

144

151 *verklingt*